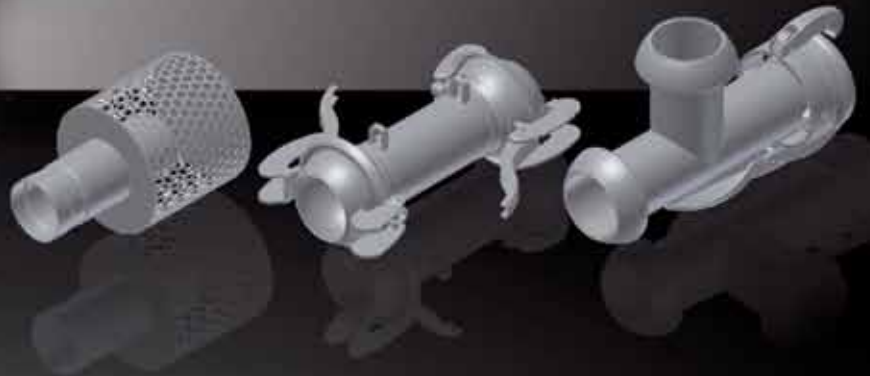


## Pipes and couplings



# INTRODUCTION

## Already 60 years high quality

Over 60 years ago, the current BBA Pumps organisation originally started as a producer of pipes and couplings. During the years we extended our range of coupling and piping systems and up to today we produce a full range of quick couplings and accessories for the (well point) dewatering market. With modern production technologies like laser cutting and robot welding we optimise our production as in an ongoing cycle. Millions of BBA quick couplings have proven their quality and value in the toughest conditions. Our quality standard is one without compromise.

## Innovation leader

Our position as innovation leader in equipment for well point dewatering has been confirmed by several patent awarded solutions. Smart pieces of equipment, application designed, to help you save costs, effort and offer you and your co-workers optimal ergonomics. Our product portfolio includes flow meters, non-return valves and discharge- and headerpipes solutions which give a new meaning to the word portable. BBA well point filters and special designed well point hose completely set new standards in the market.

## HDPE Products

Decades ago already we offered combinations of our couplings with HDPE pipe which formed discharge- and headerpipe concepts with unbeatable features. Our concepts have been copied several times but none of them offer the quality and elements like the BBA original. One of the reasons for that is because we specially design our coupling arrangements to HDPE pipe specifications in order to offer the most efficient solutions possible. You will find our HDPE products light weight, shock proof and surprisingly durable.

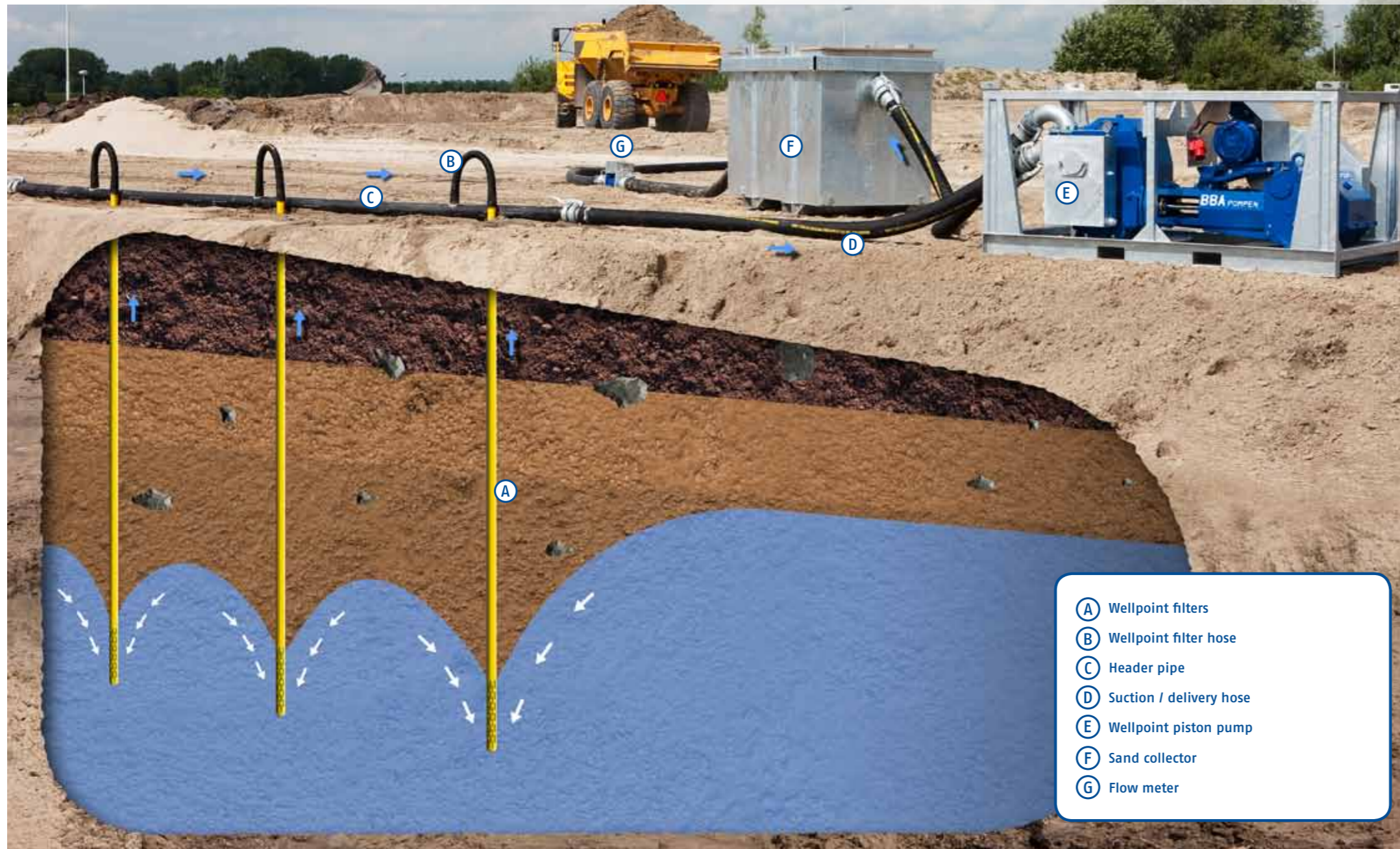
## At the right time, at the right place!

It is not just a matter of availability from stock. With a production dedicated to serve the dewatering and rental markets we now know how important timing is. Our logistics are set to bring stability in the hectic situations you might be facing. We offer you our flexibility and support together with top class products.



Contents		
Applications		4 - 15
Contents catalogue		18 - 19
1 SYSTEM B	sizes Ø 2" - 8"	20 - 41
2 SYSTEM IT	sizes Ø 8" - 12"	42 - 59
3 SYSTEM C	sizes Ø 2" - 6"	60 - 81
4 FILTERS / WELLPOINT HOSES		82 - 85
5 FLANGE PIPES		86 - 87

# BBA WELLPOINT SYSTEM



A vacuum wellpoint system is often used to lower the groundwater level. BBA Pumps has been producing wellpoint systems for decades. Our innovations are based on your experience as a daily user. Thanks to these innovations, the BBA wellpoint system is the most simple, light weight, easy to install, durable and economically wellpoint system on the market. Discover what thousands already did and get your wellpoint job done with ease and efficiency like never before!

- (A) Our application designed wellpoint filters are very light in weight and extremely shock proof. It is a pleasure to use the filters and they are very easy (hand pulled) removable from the ground and ready for use again.  
*See page 82 of this catalogue.*
- (B) The BBA wellpoint filter hose is designed to handle the short bending radius necessary in a compact wellpoint system. The special hose ends ensure a fully air leak free system.  
*See page 83 of this catalogue.*
- (C) Our BBA header pipe is extremely lightweight, shockproof and durable. Like all the other daily users; You will never use PVC or steel again.  
*See pages 38 and 78 of this catalogue.*
- (D) We have suction- and delivery hoses in different materials, all equipped with BBA quick couplings.  
*See pages 20, 42 and 60 of this catalogue.*
- (E) BBA wellpoint piston pumps. The best application designed wellpoint pump on the market. See our PT wellpoint pump catalogue.
- (F) BBA sand collectors are hot dipped galvanised, easy to handle and available with integrated flowmeter.  
*See pages 37 and 75 of this catalogue.*
- (G) Our BBA flow meters give new meaning to portable! Specially designed for wellpoint and dewatering applications the BBA Handy® flow meter range has been awarded with several patents! Light weight, portable design, stackable, lockable, vandalism proof and very easy to calibrate.  
*See pages 36 and 74 of this catalogue.*

# HORIZONTAL SOCK DEWATERING



- (A) Flow control unit
- (B) Filter hose
- (C) Header pipe
- (D) De-aeration unit
- (E) Wellpoint piston pump
- (F) Flow meter

At BBA the horizontal sock dewatering starts where the sock drain emerges from the ground.

Specially designed equipment save lots of money

(A) The BBA sock flow control unit keeps your sock system going. If limited water is available, the BBA sock flow control unit temporarily shuts off the sock drain connected to it. This prevents excessive air intake which unbalances the dewatering system and allows you to connect several sock drains to one pump!  
*See pages 35 and 76 of this catalogue.*

(B) The BBA wellpoint filter hose is designed to handle the short bending radius necessary in the system. The special hose ends ensure a fully air leak free system.  
*See page 83 of this catalogue.*

(C) Our BBA header pipe is extremely lightweight, shockproof and durable. Like all the other daily users; You will never use PVC or steel again.  
*See pages 38 and 78 of this catalogue.*

(D) BBA piston pumps. The best application designed sock dewatering pump on the market. See our PT wellpoint pump catalogue.

(E) The BBA de-aeration unit separates the air from the water. This prevents extreme pressure fluctuation in your discharge pipe system.  
*See pages 35 and 78 of this catalogue.*

(F) Our BBA flow meters give new meaning to portable! Specially designed for wellpoint and dewatering applications the BBA Handy® flow meter range has been awarded with several patents! Light weight, portable design, stackable, lockable, vandalism proof and very easy to calibrate.  
*See pages 36 and 74 of this catalogue.*

# GROUNDWATER RECHARGE



Reducing the groundwater level can have a major impact on the environment or surrounding structures. Groundwater recharge consists of returning the abstracted water to the ground in order to prevent damage, and involves the use of different devices, such as well water filters, well caps and pipes. Leave the selection of the materials to us so you can focus entirely on your drainage project.

# WATER TRANSPORT



Take the water where you want it to be. As a pioneer in the use of HDPE material in our market we still hold the leading position today. The assembly of certified quality HDPE pipes and our BBA couplings result in strong discharge pipe solutions in diameters up to 600mm. Durable pipes for daily use on construction sites, wellpoint systems, sewage bypass projects, dredging activities and emergency use. Guaranteed problem free water transport with lowest cost possible. Our HDPE pipe connections used on our couplings are special designed to be fully spill free even without the use of clamps.

# FLOW MEASUREMENT AND DE-AERATION



Whether the law requires it or you want to know it in detail; BBA offers a full range of flow measurement solutions tailor made to your application. Our patent awarded Handy® flow meters give a new meaning to the word portable. Light weight, portable design, stackable, lockable, vandalism proof and very easy to calibrate. Electromagnetic flow meters can be used in a number of ways, for example in our sand collectors or integrated in our pump units.

*See pages 36 and 74 of this catalogue.*

Because water in our applications can hold air for over 50% we developed a de-aeration unit. Especially in long discharge lines, air is responsible for pressure fluctuations causing risk and damage. The BBA de-aeration unit is compact and is placed in-line with your discharge system.

*See pages 35 and 76 of this catalogue.*

# BBA SPECIAL PRODUCTS



Having a clear focus on the wellpoint and dewatering market we face situations where application design is the only solution. Over the years this resulted in a range of special products making your dewatering life easier than ever before.

**A** Again a patent awarded solution. Water with sand causes wear on all material used. The BBA "Handy" non-return valve is made of a robust steel casing and a low-maintenance rubber discs valve. The complete assembly is light weight, portable, stackable and has a sturdy base plate. The non-return valve can be used when several pumps are connected to one discharge line like pipe-line dewatering.  
*See pages 34 and 73 of this catalogue.*

**B** Take out the air and only measure water! Savings on discharge fees up to 75%! If you hold a site dewatering permit limited on flow, this allows a considerably longer working schedule within the permit. The de-aerator unit prevents pressure surges in discharge lines. In groundwater recharge systems it results in less de-ironization in pipes and wells.  
*See pages 35 and 76 of this catalogue.*

**C** The BBA Flow Control unit keeps your sock system going. If limited water is available, the BBA sock flow control unit temporarily shut off the sock drain connected to it. This to prevent excessive air intake which unbalances the sock system. This allows you to connect several sock drains to one pump!  
*See pages 35 and 76 of this catalogue.*

- A** BBA "Handy" non-return valve
- B** BBA de-aeration unit
- C** BBA sock flow control unit



# CATALOGUE



#### SYSTEM B

- Is available in the sizes 2-8 inch.
- Is compatible with the bauer system.
- The maximum system pressure is 10 bar.

#### SYSTEM IT

- Is available in the sizes 8, 10 and 12 inch.
- Is compatible with the Italian system.
- The maximum system pressure is 6 bar.

#### SYSTEM C

- Is available in the sizes 2-6 inch.
- Is compatible with the perrot system.
- The maximum system pressure is 10 bar.

- Larger diameters up to 600 mm are available on request.
- A large selection of our couplings is "lockable" by blocking the lever system with a pin.



Products with this symbol are application designed by BBA Pumps.

#### 1 SYSTEM B

20 - 41

Compatible with system bauer		sizes Ø 2" - 8"
1.1	Quick couplings	20
1.2	Strainers	32
1.3	BBA non-return valves	34
1.4	De-aeration and flow measurement	35
1.5	Pipes	38
1.6	Hoses	40



#### 2 SYSTEM IT

42 - 59

		sizes Ø 8" - 12"
2.1	Quick couplings	42
2.2	Strainers	56
2.3	BBA non-return valves	58
2.4	Pipes	58
2.5	Hoses	59



#### 3 SYSTEM C

60 - 81

Compatible with system perrot		sizes Ø 2" - 6"
3.1	Quick couplings	60
3.2	Strainers	71
3.3	BBA non-return valves	73
3.4	De-aeration and flow measurement	74
3.5	Pipes	78
3.6	Hoses	80



#### 4 FILTERS / WELLPOINT HOSES

82 - 85

4.1	Filters / Wellpoint hoses	82 - 85
-----	---------------------------	---------



#### 5 FLANGE PIPES

86 - 87

5.1	HDPE 100 pipe with flanges Flange steel, galvanized, with epoxy coating	86
5.2	HDPE 100 pipe with flanges Flange steel, with pp coating glass fiber reinforced	87



## SYSTEM B

### 1.1 Quick couplings

#### 400 - Coupling male (ball / lever) complete black



Art.nr.	∅	
	mm	inch
03552601	50	2
03552602	70	2,5
03552603	89	3
03552604	108	4
03552606	159	6
03552608	216	8

#### 401 - Lever ring galvanized



Art.nr.	∅	
	mm	inch
03551386	50	2
03551387	70	2,5
03551388	89	3
03551389	108	4
03551391	159	6
03551405	216	8

#### 402 - Ball without lever black



Art.nr.	∅	
	mm	inch
03551392	50	2
03551393	70	2,5
03551394	89	3
03551395	108	4
03551397	159	6
03551404	216	8

#### 403 - Female (cup) black



Art.nr.	∅	
	mm	inch
03551398	50	2
03551399	70	2,5
03551400	89	3
03551401	108	4
03551403	159	6
03551406	216	8

#### 404 - Hook short black



Art.nr.	∅	
	mm	inch
03052140	50	2
03052141	70	2,5
03052142	89	3
03052144	108	4
03052146	159	6
03052148	216	8

## SYSTEM B

### Quick couplings 1.1

#### Hook long black - 405



Art.nr.	∅	
	mm	inch
03052130	50	2
03052131	70	2,5
03052132	89	3
03052134	108	4
03052136	159	6
03052138	216	8

#### Lever black - 406



Art.nr.	∅	
	mm	inch
03052120	50	2
03052121	70	2,5
03052122	89	3
03052124	108	4
03052126	159	6
03052128	216	8

#### Rivet (set 3 pcs) black - 407



Art.nr.	∅	
	mm	inch
03052150	50	2
03052151	70	2,5
03052152	89	3
03052154	108	4
03052156	159	6
03052158	216	8

#### O-ring rubber - 408



Art.nr.	∅	
	mm	inch
03691404	50	2
03691405	70	2,5
03691406	89	3
03691407	108	4
03691409	159	6
03691410	216	8

#### Welding coupling female (cup) black - 409



Art.nr.	∅	
	mm	inch
03041720	50	2
03041721	70	2,5
03041722	89	3
03041724	108	4
03041726	159	6
03041728	216	8

## SYSTEM B

### 1.1 Quick couplings

#### 410 - Welding coupling male (ball / lever) black



Art. nr.	∅	
	mm	inch
03041700	50	2
03041701	70	2,5
03041702	89	3
03041704	108	4
03041706	159	6
03041708	216	8

#### 415 - Hose connection female (cup) galvanised



Art. nr.	∅	
	mm	inch
03581461	50	2
03581462	70	2,5
03581463	89	3
03581457	108	4
03581459	159	6
03581468	216	8

#### 416 - Hose connection "special" female (cup) galvanised



Art. nr.	∅		∅ spigot
	mm	inch	
03581472	108	4	50
03581473	108	4	63
03581476	108	4	75
03581464	159	6	50
03581465	159	6	63
03581466	159	6	75
03581467	159	6	100

#### 417 - Hose connection male (ball / lever) galvanised



Art. nr.	∅	
	mm	inch
03581444	50	2
03581445	70	2,5
03581446	89	3
03581447	108	4
03581449	159	6
03581450	216	8

## SYSTEM B

### Quick couplings 1.1

#### Hose connection special male (ball / lever) galvanised - 418



∅ spigot	∅		Art. nr.
	mm	inch	
50	108	4	03581452
63	108	4	03581453
75	108	4	03581432
50	159	6	03581480
63	159	6	03581481
75	159	6	03581482
100	159	6	03581483

#### Hose clamp light duty - 810



∅	∅		Art. nr.
	mm	inch	
50-65	2	1866170140	
58-75	2,5	1866171180	
68-85	3	1866171181	
87-112	4	1866171185	
104-138	6	1866171190	
130-165	8	1866171192	

#### Hose clamp medium duty - 812



∅	∅		Art. nr.
	mm	inch	
52-55	2	07204260	
60-63	2	07204262	
64-70	2,5	07204263	
68-73	2,5	07204264	
74-79	3	07204265	
86-91	3	07204267	
97-104	4	07204269	
112-121	4	07204271	
150-160	6	07204275	
162-174	6	07204276	

#### BBA Hose clamp heavy duty - 811



∅	∅		Art. nr.
	mm	inch	
112-121	4	07214327	
162-175	6	07214330	
215-228	8	07214332	
267-282	10	07214334	
318-336	12	07214336	

# SYSTEM B

## 1.1 Quick couplings galvanised

### 419 - Bend 90°



Art.nr.	∅	
	mm	inch
03571410	50	2
03571411	70	2,5
03571412	89	3
03571413	108	4
03571415	159	6
03571416	216	8

### 421 - Bend 45°



Art.nr.	∅	
	mm	inch
03571420	50	2
03571421	70	2,5
03571422	89	3
03571423	108	4
03571425	159	6
03571426	216	8

### 423 - Flange bend female (cup) 90° - BBA



Art.nr.	∅ Coupling		Flange (holes)
	mm	inch	
03215701	50	2	K125 (4)
03215702	70	2,5	K145 (4)
03215703	89	3	K160 (4)
03215704	108	4	K180 (8)
03215706	159	6	K240 (8)
03215708	216	8	K295 (8)

### 425 - Flange bend female (cup) 90° - DIN



Art.nr.	∅ Coupling		Flange (holes)
	mm	inch	
03215711	50	2	K125 (4)
03215712	70	2,5	K145 (4)
03215713	89	3	K160 (4)
03215714	108	4	K180 (8)
03215716	159	6	K240 (8)
03215718	216	8	K295 (8)

### 480 - Flange bend female (cup) 90° - ANSI



Art.nr.	∅ Coupling	
	mm	inch
03215721	50	2
03215722	70	2,5
03215723	89	3
03215724	108	4
03215726	159	6
03215728	216	8

# SYSTEM B

## Quick couplings galvanised 1.1

### Flange bend female (cup) 135° - BBA - 424



Flange	∅ Coupling		Art.nr.
	mm	inch	
K125 (4)	50	2	03215731
K145 (4)	70	2,5	03215732
K160 (4)	89	3	03215733
K180 (8)	108	4	03621460
K240 (8)	159	6	03215736
K295 (8)	216	8	03215738

### Flange bend female (cup) 135° - DIN - 426



Flange (holes)	∅ Coupling		Art.nr.
	mm	inch	
K125 (4)	50	2	03215741
K145 (4)	70	2,5	03215742
K160 (4)	89	3	03215743
K180 (8)	108	4	03215744
K240 (8)	159	6	03215746
K295 (8)	216	8	03215748

### Flange bend female (cup) 135° - ANSI - 481



∅ Coupling	Art.nr.	
		mm
50	2	03215751
70	2,5	03215752
89	3	03215753
108	4	03215754
159	6	03215756
216	8	03215758

### Threaded bend female (cup) 90° - outer thread - 427



∅	Art.nr.	
		mm
50	2	03131401
70	2,5	03131402
89	3	03131403
108	4	03131404
159	6	03131406
216	8	03131408

### Ring gasket - 801



∅	Art.nr.	
		mm
50	2	03401911
70	2,5	03401913
89	3	03401914
108	4	03401915
159	6	03401917
216	8	03401918

## SYSTEM B

### 1.1 Quick couplings galvanised

#### 802 - Flange gasket DIN



Art.nr.	∅	
	mm	inch
03401921	50	2
03401923	70	2,5
03401924	89	3
03401925	108	4
03401927	159	6
03401928	216	8

#### 803 - Flange gasket ANSI



Art.nr.	∅	
	mm	inch
03401937	50	2
03401938	70	2,5
03401939	89	3
03401940	108	4
03401941	159	6
03401942	216	8

#### 429 - Reducer



Art.nr.	∅ (female (cup) x male (ball / lever))	
	mm	inch
03661510	70 x 50	2,5 x 2
03661511	89 x 70	3 x 2,5
03661512	108 x 89	4 x 3
03661514	159 x 108	6 x 4
03661515	216 x 159	8 x 6

#### 430 - Increaser



Art.nr.	∅ (female (cup) x male (ball / lever))	
	mm	inch
03661500	50 x 70	2 x 2,5
03661501	70 x 89	2,5 x 3
03661502	89 x 108	3 x 4
03661506	108 x 159	4 x 6
03661508	159 x 216	6 x 8

#### 431 - End plug female (cup)



Art.nr.	∅	
	mm	inch
03561416	50	2
03561417	70	2,5
03561418	89	3
03561419	108	4
03561421	159	6
03561431	216	8

## SYSTEM B

### Quick couplings galvanised 1.1

#### End plug male (ball / lever) - 432



Art.nr.	∅	
	mm	inch
03561422	50	2
03561423	70	2,5
03561424	89	3
03561425	108	4
03561427	159	6
03561429	216	8

#### T-piece male (ball / lever) outlet - 433



Art.nr.	∅	
	mm	inch
03591464	50	2
03591465	70	2,5
03591466	89	3
03591467	108	4
03591469	159	6
03591470	216	8

#### T-piece female (cup) outlet - 434



Art.nr.	∅	
	mm	inch
03591869	50	2
03591870	70	2,5
03591871	89	3
03591873	108	4
03591875	159	6
03591876	216	8

#### T-piece outside thread outlet - 435



Art.nr.	∅	
	mm	inch
03591901	108	4

#### T-piece male (ball / lever) outlet 45° - 436



Art.nr.	∅	
	mm	inch
03591904	108	4
03591906	159	6

## SYSTEM B

### 1.1 Quick couplings galvanised

#### 437 - Y-piece 2 x male (ball / lever) 1 x female (cup)



Art. nr.	∅	
	mm	inch
03221383	108	4
03221386	159	6
03221388	216	8

#### 438 - Y-piece 2 x female (cup) 1 x male (ball / lever) 45°



Art. nr.	∅	
	mm	inch
03221394	108	4
03221396	159	6
03221398	216	8

#### 439 - Reversing piece male (ball / lever)



Art. nr.	∅	
	mm	inch
03651481	50	2
03651482	70	2,5
03651483	89	3
03651484	108	4
03651486	159	6
03651488	216	8

#### 440 - Reversing piece female (cup)



Art. nr.	∅	
	mm	inch
03651491	50	2
03651492	70	2,5
03651493	89	3
03651494	108	4
03651496	159	6
03651498	216	8

#### 441 - Sock drain connection piece



Art. nr.	∅		∅ Drain connection	
	mm	inch	mm	
03081903	108	4	89	
03081904	108	4	100	

## SYSTEM B

### Quick couplings galvanised 1.1

#### Flange piece male (ball / lever) - BBA - 442



Flange (holes)	∅		Art. nr.
	mm	inch	
K125 (4)	50	2	03611450
K145 (4)	70	2,5	03611451
K160 (4)	89	3	03611452
K180 (8)	108	4	03611455
K180 (8)	108/50	4/2	03611456
K180 (8)	108/89	4/3	03611454
K240 (8)	159	6	03611457
K295 (8)	216	8	03611458

#### Flange piece male (ball / lever) - DIN - 443



Flange (holes)	∅		Art. nr.
	mm	inch	
K125 (4)	50	2	03611440
K145 (4)	70	2,5	03611441
K160 (4)	89	3	03611442
K180 (8)	108	4	03611443
K240 (8)	159	6	03611446
K295 (8)	216	8	03611448

#### Flange piece male (ball / lever) - ANSI - 458



Flange (holes)	∅		Art. nr.
	mm	inch	
	50	2	03612471
	70	2,5	03612472
	89	3	03612473
	108	4	03612474
	159	6	03612476
	216	8	03612478

#### Flange piece female (cup) - BBA - 444



Flange (holes)	∅		Art. nr.
	mm	inch	
K125 (4)	50	2	03611471
K145 (4)	70	2,5	03611472
K160 (4)	89	3	03611473
K180 (8)	108	4	03611461
K180 (8)	108/50	4/2	03611459
K180 (8)	108/89	4/3	03611460
K240 (8)	159	6	03611463
K295 (8)	216	8	03611466

## SYSTEM B

### 1.1 Quick couplings galvanised

#### 445 - Flange piece female (cup) - DIN



Art.nr.	∅		Flange (holes)
	mm	inch	
03612501	50	2	K125 (4)
03612502	70	2,5	K145 (4)
03612503	89	3	K160 (4)
03612504	108	4	K180 (8)
03612506	159	6	K240 (8)
03612508	216	8	K295 (8)

#### 459 - Flange piece female (cup) - ANSI



Art.nr.	∅	
	mm	inch
03612481	50	2
03612482	70	2,5
03612483	89	3
03612484	108	4
03612486	159	6
03612488	216	8

#### 801 - Ring gasket



Art.nr.	∅	
	mm	inch
03401910	30	1,5
03401911	50	2
03401913	70	2,5
03401914	89	3
03401915	108	4
03401917	159	6

#### 802 - Flange gasket DIN



Art.nr.	∅	
	mm	inch
03401921	50	2
03401923	70	2,5
03401924	89	3
03401925	108	4
03401927	159	6
03401928	216	8

#### 803 - Flange gasket ANSI



Art.nr.	∅	
	mm	inch
03401837	50	2
03401838	70	2,5
03401839	89	3
03401840	108	4
03401841	159	6
03401842	216	8

## SYSTEM B

### Quick couplings galvanised 1.1

#### Thread piece male (ball / lever) - outer thread - 446



Art.nr.	∅	
	mm	inch
03601440	50	2
03601432	70	2,5
03601442	89	3
03601443	108	4
03601444	108/89	4/3
03601445	159	6
03601452	216	8

#### Thread piece female (cup) - outer thread - 447



Art.nr.	∅	
	mm	inch
03601446	50	2
03601447	70	2,5
03601448	89	3
03601449	108	4
03601450	159	4/3
03601451	159	6
03601453	216	8

#### Thread piece male (ball / lever) - inner thread - 448



Art.nr.	∅	
	mm	inch
03601439	50	2
03601436	70	2,5
03601456	89	3
03601457	108	4
03601459	159	6
03601460	216	8

#### Thread piece female (cup) - inner thread - 449



Art.nr.	∅	
	mm	inch
03601461	50	2
03601462	70	2,5
03601463	89	3
03601464	108	4
03601466	159	6
03601468	216	8



## SYSTEM B

### 1.2 Strainers

#### 453 - Strainer with coupling male (ball / lever)



Art. nr.	∅	
	mm	inch
03141740	50	2
03141741	70	2,5
03141743	89	3
03141744	108	4
03141746	159	6
03141748	216	8

#### 170 - Strainer with hose connection



Art. nr.	∅	
	mm	inch
03141241	50	2
03141242	70	2,5
03141243	89	3
03141244	108	4
03141246	159	6

#### 454 - Strainer low level male (ball / lever)



Art. nr.	∅	
	mm	inch
03141742	89	3
03141745	108	4
03141747	159	6

#### 456 - Sewage strainer with coupling male (ball / lever)



Art. nr.	∅	
	mm	inch
03841864	108	4
03841866	159	6
03841868	216	8

#### 155 - Sewage strainer hose connection



Art. nr.	∅	
	mm	inch
03842004	108	4
03842006	159	6

## SYSTEM B

### Strainers 1.2

#### Strainer bin with coupling female (cup) - 460



Art. nr.	∅	
	mm	inch
03842104	108	4
03842106	159	6

#### Hose clamp medium duty - 812



Art. nr.	∅	
	mm	inch
07204260	52-55	2
07204262	60-63	2
07204263	64-70	2,5
07204264	68-73	2,5
07204265	74-79	3
07204267	86-91	3
07204269	97-104	4
07204271	112-121	4
07204275	150-160	6
07204276	162-174	6

#### Hose clamp heavy duty - 811



Art. nr.	∅	
	mm	inch
07214327	112-121	4
07214330	162-175	6
07214332	215-228	8
07214334	267-282	10
07214336	318-336	12

#### Gate valve with couplings - 461



Art. nr.	∅	
	mm	inch
09021854	108	4
09021856	159	6

## SYSTEM B

### 1.3 BBA non-return-valve "Handy"

#### 462 - BBA non-return-valve "Handy" male (ball / lever) x female (cup)



Art. nr.	∅	
	mm	inch
09051327	108	4
09051329	159	6

#### 463 - BBA non-return-valve "Handy" female (cup) x male (ball / lever) - USA



Art. nr.	∅	
	mm	inch
09051334	108	4
09051336	159	6

#### BBA "Handy" non-return-valve

Our BBA "Handy" non-return valve is made of a robust steel casing and a low-maintenance rubber discs valve.

The complete assembly is light weight, portable, stackable and has a sturdy base plate.

The non-return valve can be used when several pumps are connected to one discharge line like pipe-line dewatering.



## SYSTEM B

### De-aeration and flow measurement 1.4

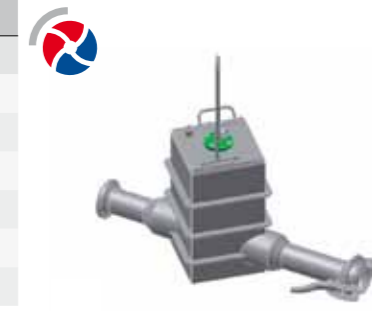
#### Sock flow control unit - 864

	∅		Art. nr.
	mm	inch	
	108	4	13407218



#### De-aeration unit - 861

	∅		Art. nr.
	mm	inch	
	108	4	13313024
	159	6	13313026



#### BBA sock flow control unit

The BBA sock flow control unit keeps your sock system going. If limited water is available, the BBA sock flow control unit temporarily shuts off the sock drain connected to it.

This prevents excessive air intake which unbalances the sock system and allows you to connect several sock drains to one pump!

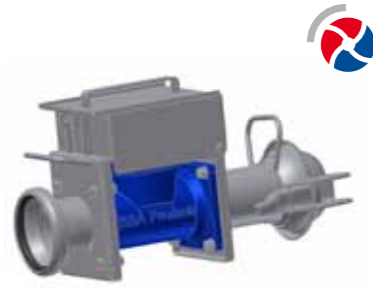
#### BBA de-aeration unit

The BBA de-aeration unit separates the air from the water. This prevents extreme pressure fluctuation in your discharge pipe system.

# SYSTEM B

## 1.4 De-aeration and flow measurement

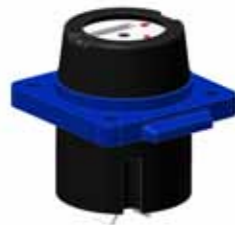
### 464 - BBA "Handy" flow meter, portable in casing with quick couplings



Art.nr.	∅ (inner)		type
	mm	inch	
13018107	102	4	turbine outside waterstream DWI
13018153	152	6	turbine outside waterstream DWI

### 900 - BBA "Handy" flow meter unit

for 464 and 903



Art.nr.	∅		type
	mm	inch	
13060050	50	2	turbine outside waterstream DWI
13060065	70	2,5	turbine outside waterstream DWI
13060080	89	3	turbine outside waterstream DWI
13060100	108	4	turbine outside waterstream DWI
13060150	159	6	turbine outside waterstream DWI
13060200	216	8	turbine outside waterstream DWI

### 465 - BBA "Handy" flow meter, portable in casing with quick couplings



Art.nr.	∅ (inner)		type
	mm	inch	
13018306	102	4	turbine inside waterstream DWM
13018353	152	6	turbine inside waterstream DWM

### 901 - BBA "Handy" flow meter unit

for 465 and 904



Art.nr.	∅		type
	mm	inch	
13017101	108	4	turbine inside waterstream DWM
13017151	159	6	turbine inside waterstream DWM

### 903 - BBA "Handy" flow meter



Art.nr.	∅		type
	mm	inch	
13021201	50	2	turbine outside waterstream WI
13021066	70	2,5	turbine outside waterstream WI
13021081	89	3	turbine outside waterstream WI
13021101	108	4	turbine outside waterstream WI
13021151	159	6	turbine outside waterstream WI
13021051	216	8	turbine outside waterstream WI

# SYSTEM B

## De-aeration and flow measurement 1.4

### BBA flow meter - 904

type	∅		Art.nr.
	mm	inch	
turbine inside waterstream WM	50	2	13011051
turbine inside waterstream WM	70	2,5	13011066
turbine inside waterstream WM	89	3	13011081
turbine inside waterstream WM	108	4	13011101
turbine inside waterstream WM	159	6	13011151
turbine inside waterstream WM	216	8	13011201



### Flow meter electro magnetic - 910

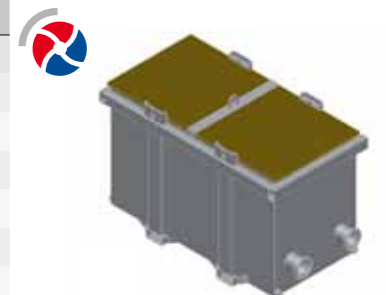
type	∅		Art.nr.
	mm	inch	
turbine inside waterstream WM	50	2	14510050
turbine inside waterstream WM	70	2,5	14510065
turbine inside waterstream WM	89	3	14510080
turbine inside waterstream WM	108	4	14510100
turbine inside waterstream WM	159	6	14510150
turbine inside waterstream WM	216	8	14510200



Signal converter 115-230V AC 50/60 Hz MAG6000	14500025
Signal converter 11-30V DC/11-24V AC 50/60 Hz MAG6000	14500020
Signal converter 115-230V AC 50/60 Hz MAG5000	14500015
Signal converter 11-30V DC/11-24V AC 50/60 Hz MAG5000	14500008

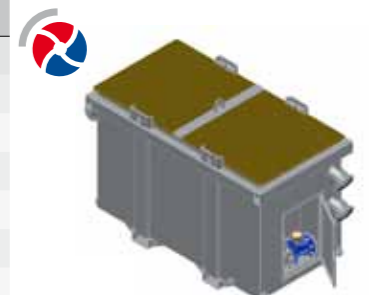
### Sand collector - 466

flow capacity	Art.nr.
m <sup>3</sup>	
60	14800600
90	14801032
140	14801033



### Sand collector for flow meter - 467


flow capacity	Art.nr.
m <sup>3</sup>	
60	14800594
90	14801022
140	14801023
flow meter excluded	



# SYSTEM B

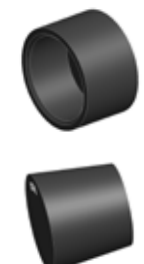
## 1.5 Pipes

### 1210 – Header pipes HDPE with quick couplings




Art.nr.	∅ coupling		length m	∅ branch mm
	mm	inch		
01221037	110	4	6	2 x 51
01221038	110	4	6	3 x 51
01221041	110	4	6	4 x 51
01221042	110	4	6	2 x 58
01221040	110	4	6	3 x 58
01221043	110	4	6	4 x 58
01221065	160	6	6	3 x 51
01221071	160	6	6	4 x 51
01221077	160	6	6	5 x 51
01221113	160	6	6	3 x 58
01221099	160	6	6	4 x 58
01221105	160	6	6	5 x 58

### 1290 – Branch cover / plug



Art.nr.	type	∅		∅ branch mm
		mm	inch	
11421939	cover	30	1,5	51
11421940	cover	50	2	58
11421339	conical plug	30	1,5	51 / 58
11421340	conical plug	50	2	-

### 1211 – Header pipes HDPE with quick couplings




Art.nr.	∅		type
	mm	inch	
01221125	160	6	3 x male SYSTEM B
01221131	160	6	4 x male SYSTEM B
01221137	160	6	5 x male SYSTEM B

# SYSTEM B


## Pipes 1.5

### Discharge pipes HDPE with quick couplings – 1110



max. pressure bar	length m	∅ coupling		Art.nr.
		mm	inch	
3	5	110	4	01050905
3	6	110	4	01050906
3	5	160	6	01221405
3	6	160	6	01221406

### Discharge pipes HDPE with quick couplings with clamp – 1111



max. pressure bar	clamps	length m	∅ coupling		Art.nr.
			mm	inch	
6	2 x medium duty	5	110	4	01050915
6	2 x medium duty	6	110	4	01050916
5	2 x medium duty	5	160	6	01223386
5	2 x medium duty	6	160	6	01223387



### HDPE pipes

- Shock proof
- Lightweight
- Durable
- Corrosion free
- Easy handling
- Easy to repair
- Easy to install

# SYSTEM B

## 1.6 Hoses

### 1301 – Suction / delivery hose Heduflex with quick couplings



Art.nr.	Ø		length	clamps	max. pressure
	mm	inch			
07048186	102	4	3	2 x medium duty	3
07048176	102	4	3	2 x BBA heavy duty	6
07048174	102	4	4	2 x medium duty	3
07048175	102	4	4	2 x BBA heavy duty	6
07048196	152	6	3	2 x BBA heavy duty	4
07048197	152	6	4	2 x BBA heavy duty	4

### 1310 – Suction / delivery hose Armorvin with quick couplings



Art.nr.	Ø		length	clamps	max. pressure
	mm	inch			
07018024	100	4	3	2 x medium duty	3
07018026	100	4	4	2 x medium duty	3
07018030	150	6	3	4 x medium duty	2
07018029	150	6	4	4 x medium duty	2

### 1320 – Suction / delivery hose Vacupress with quick couplings



Art.nr.	Ø		length	clamp	max. pressure
	mm	inch			
07050110	100	4	3	medium duty	3
07050113	100	4	4	medium duty	2
07050171	150	6	3	medium duty	3
07050172	150	6	4	medium duty	3



# SYSTEM B

## Hoses 1.6

### Fire hose white with quick couplings storz - 1330

max. pressure	length	coupling type	Ø		Art.nr.
			mm	inch	
17	20	NA66	50	2	07064209
17	20	NA81	50	2	07064211
17	20	NA81	75	3	07064213
17	20	NA89	75	3	07064217



### Fire hose red with quick couplings storz - 1331

max. pressure	length	coupling type	Ø		Art.nr.
			mm	inch	
17	20	NA81	50	2	07064302
17	20	NA81	75	3	07064304
17	20	NA89	75	3	07064305



### Flat rollable hose vinyl with quick couplings - 1332

max. pressure	length	clamp	Ø		Art.nr.
			mm	inch	
6	25	medium duty	100	4	07025328
6	25	medium duty	150	6	07026326



# SYSTEM IT

## 2.1 Quick couplings

### 601 - Coupling female (cup / lever) complete black



Art.nr.	∅	
	mm	inch
03751471	200	8
03751472	250	10
03751473	300	12

### 603 - Coupling male (ball / ring) black



Art.nr.	∅	
	mm	inch
03751475	200	8
03751476	250	10
03751477	300	12

### 602 - Ring black



Art.nr.	∅	
	mm	inch
03751483	200	8
03751484	250	10
03751485	300	12

### 604 - Hook short black



Art.nr.	∅	
	mm	inch
03051998	200	8
03052000	250	10
03051999	300	12

### 605 - Hook long black



Art.nr.	∅	
	mm	inch
03051987	200	8
03051990	250	10
03051989	300	12

# SYSTEM IT

## Quick couplings 2.1

### Lever black - 606



Art.nr.	∅	
	mm	inch
03051977	200	8
03051980	250	10
03051979	300	12

### Rivet (set 3 pcs) black - 607



Art.nr.	∅	
	mm	inch
03052008	200	8
03052010	250	10
03052009	300	12

### O-ring rubber - 608



Art.nr.	∅	
	mm	inch
03891487	200	8
03891488	250	10
03891489	300	12

### Welding coupling male (ball / ring) black - 609



Art.nr.	∅	
	mm	inch
03751608	200	8
03751610	250	10
03751612	300	12

### Welding coupling female (cup / lever) black - 610



Art.nr.	∅	
	mm	inch
03751618	200	8
03751619	250	10
03751620	300	12

# SYSTEM IT

## 2.1 Quick couplings galvanised

### 611 - Hose connection male (ball / ring)



Art. nr.	∅	
	mm	inch
03771479	200	8
03771480	250	10
03771481	300	12

### 613 - Hose connection female (cup / lever)



Art. nr.	∅	
	mm	inch
03771491	200	8
03771492	250	10
03771493	300	12

### 811 - BBA Hose clamp heavy duty



Art. nr.	∅	
	mm	inch
07214332	215-228	8"
07214334	267-282	10"
07214336	318-336	12"

### 619 - Bend 90°



Art. nr.	∅	
	mm	inch
03781861	200	8
03781862	250	10
03781863	300	12

### 621 - Bend 45°



Art. nr.	∅	
	mm	inch
03781865	200	8
03781866	250	10
03781867	300	12

# SYSTEM IT

## Quick couplings galvanised 2.1

### Flange bend male (ball / ring) 90° (PN10) - BBA - 622



Flange (holes)	∅		Art. nr.
	mm	inch	
K295 (8)	200	8	03121318
K350 (12)	250	10	03121410
K400 (12)	300	12	03121411

### Flange bend male (ball / ring) 90° -DIN - 623



Flange (holes)	∅		Art. nr.
	mm	inch	
K295 (8)	200	8	03121351
K350 (12)	250	10	03121352
K400 (12)	300	12	03121353

### Flange bend male (ball / ring) 90° - ANSI - 680



Flange (holes)	∅		Art. nr.
	mm	inch	
K295 (8)	200	8	03121376
K350 (12)	250	10	03121377
K400 (12)	300	12	03121378

### Flange bend male (ball / ring) 135° (PN10) - BBA - 624



Flange (holes)	∅		Art. nr.
	mm	inch	
K295 (8)	200	8	03121328
K350 (12)	250	10	03121346
K400 (12)	300	12	03121347

### Flange bend male (ball / ring) 135° - DIN - 625



Flange (holes)	∅		Art. nr.
	mm	inch	
K295 (8)	200	8	03121354
K350 (12)	250	10	03121355
K400 (12)	300	12	03121356

## SYSTEM IT

### 2.1 Quick couplings galvanised

#### 681 - Flange bend male (ball / ring) 135° - ANSI



Art.nr.	∅	
	mm	inch
03121380	200	8
03121381	250	10
03121382	300	12

#### 802 - Flange gasket - DIN



Art.nr.	∅	
	mm	inch
03401928	200	8
03401930	250	10
03401931	300	12

#### 803 - Flange gasket - ANSI



Art.nr.	∅	
	mm	inch
03401942	200	8
03401943	250	10
03401944	300	12

#### 629 - Transition piece female (cup / lever) x male (ball / ring)



Art.nr.	∅	
	mm	inch
03862201	200 x 250	8 x 10
03862202	200 x 300	8 x 12
03862204	250 x 200	10 x 8
03862205	250 x 300	10 x 12

#### 630 - Transition piece male (ball / ring) x female (cup / lever)



Art.nr.	∅	
	mm	inch
03862207	200 x 250	8 x 10
03862208	200 x 300	8 x 12
03862210	250 x 200	10 x 8
03862211	250 x 300	10 x 12

## SYSTEM IT

### Quick couplings galvanised 2.1

#### Transition piece male (ball / ring) SYSTEM IT x female (cup / lever) SYSTEM C - 657

Art.nr.	∅	
	mm	inch
03862206	200 x 159	8 x 6
03862209	250 x 159	10 x 6



#### Transition piece female (cup / lever) SYSTEM IT x female (cup) SYSTEM B - 645

Art.nr.	∅	
	mm	inch
03862200	200 x 159	8 x 6
03862203	250 x 159	10 x 6



#### Transition piece male (ball / ring) SYSTEM IT x male (ball / lever) SYSTEM B - 641

Art.nr.	∅	
	mm	inch
03862255	200 x 159	8 x 6
03862256	250 x 159	10 x 6



#### Transition piece female (cup/lever) system IT x female (cup) system B - 647

Art.nr.	∅	
	mm	inch
03862249	200 x 159	8 x 6
03862250	250 x 159	10 x 6



#### End plug female (cup / lever) - 632

Art.nr.	∅	
	mm	inch
03762000	200	8
03762001	250	10
03762002	300	12





# SYSTEM IT

## 2.1 Quick couplings galvanised

### 631 - End plug male (ball / ring)



Art.nr.	∅	
	mm	inch
03762005	200	8
03762006	250	10
03762007	300	12

### 633 -T-piece 1 x female (cup / lever)



Art.nr.	∅	
	mm	inch
03792100	200	8
03792101	250	10
03792102	300	12

### 634 -T-piece x 1 x male (ball / ring)



Art.nr.	∅	
	mm	inch
03792105	200	8
03792106	250	10
03792107	300	12

### 687 -T-piece x flange - BBA



Art.nr.	∅		Flange (holes)
	mm	inch	
03802018	200	8	K295 (8)
03802019	250	10	K350 (12)
03802020	300	12	K400 (12)

### 673 - T-piece x Flange - DIN



Art.nr.	∅		Flange (holes)
	mm	inch	
03802008	200	8	K295 (8)
03802009	250	10	K350 (12)
03802010	300	12	K400 (12)

# SYSTEM IT

## Quick couplings galvanised 2.1

### T-piece x Flange ANSI - 674

Flange (holes)	∅		Art.nr.
	mm	inch	
K295 (8)	200	8	03802028
K350 (12)	250	10	03802029
K400 (12)	300	12	03802030



### T-piece Flange BBA x female SYSTEM IT - 688

Flange (holes)	∅		Art.nr.
	mm	inch	
K295 (8)	200	8	03802118
K350 (12)	250	10	03802119
K400 (12)	300	12	03802120



### T-piece Flange DIN x female SYSTEM IT - 675

Flange (holes)	∅		Art.nr.
	mm	inch	
K295 (8)	200	8	03802108
K350 (12)	250	10	03802109
K400 (12)	300	12	03802110



### T-piece Flange ANSI x female SYSTEM IT - 676

Flange (holes)	∅		Art.nr.
	mm	inch	
K295 (8)	200	8	03802128
K350 (12)	250	10	03802129
K400 (12)	300	12	03802130



### T-piece Flange BBA x male SYSTEM IT - 689

Flange (holes)	∅		Art.nr.
	mm	inch	
K295 (8)	200	8	03802218
K350 (12)	250	10	03802219
K400 (12)	300	12	03802220



# SYSTEM IT

## 2.1 Quick couplings galvanised

### 677 - T-piece flange DIN x male SYSTEM IT



Art.nr.	∅		Flange (holes)
	mm	inch	
03802208	200	8	K295 (8)
03802209	250	10	K350 (12)
03802210	300	12	K400 (12)

### 678 - T-piece flange ANSI x male SYSTEM IT



Art.nr.	∅		Flange (holes)
	mm	inch	
03802228	200	8	K295 (8)
03802229	250	10	K350 (12)
03802230	300	12	K400 (12)

### 669 - T-piece x female SYSTEM C



Art.nr.	∅	
	mm	inch
03091167	200 x 108	8 x 4
03091168	200 x 159	8 x 6
03091164	250 x 108	10 x 4
03091169	250 x 159	10 x 6
03091172	300 x 108	12 x 4
03091173	300 x 159	12 x 6

### 670 - T-piece x female SYSTEM B



Art.nr.	∅	
	mm	inch
03091175	200 x 108	8 x 4
03091176	200 x 159	8 x 6
03091177	250 x 108	10 x 4
03091178	250 x 159	10 x 6
03091179	300 x 108	12 x 4
03091180	300 x 159	12 x 6

### 671 - T-piece male - female x 2 x female SYSTEM C



Art.nr.	∅	
	mm	inch
03091220	200 x 2 x 108	8 x 2 x 4
03091221	200 x 2 x 159	8 x 2 x 6
03091222	250 x 2 x 108	10 x 2 x 4
03091223	250 x 2 x 159	10 x 2 x 6
03091224	300 x 2 x 108	12 x 2 x 4
03091225	300 x 2 x 159	12 x 2 x 6

# SYSTEM IT

## Quick couplings galvanised 2.1

### T piece male - female x 2 x female SYSTEM B - 672



Art.nr.	∅	
	mm	inch
03091230	200 x 2 x 108	8 x 2 x 4
03091231	200 x 2 x 159	8 x 2 x 6
03091232	250 x 2 x 108	10 x 2 x 4
03091233	250 x 2 x 159	10 x 2 x 6
03091234	300 x 2 x 108	12 x 2 x 4
03091235	300 x 2 x 159	12 x 2 x 6

### T piece male - female x 1 x female 45° SYSTEM C - 636



Art.nr.	∅	
	mm	inch
03091170	200 x 108 x 200	8 x 4 x 8
03091171	200 x 159 x 200	8 x 6 x 8
03091183	250 x 108 x 250	10 x 4 x 10
03091184	250 x 159 x 250	10 x 6 x 10
03091185	300 x 108 x 300	12 x 4 x 12
03091186	300 x 159 x 300	12 x 6 x 12

### T piece male - female x 1 x female 45° SYSTEM B - 637



Art.nr.	∅	
	mm	inch
03091190	200 x 108 x 200	8 x 4 x 8
03091191	200 x 159 x 200	8 x 6 x 8
03091192	250 x 108 x 250	10 x 4 x 10
03091193	250 x 159 x 250	10 x 6 x 10
03091194	300 x 108 x 300	12 x 4 x 12
03091195	300 x 159 x 300	12 x 6 x 12

### T piece male - female x 2 x female 45° SYSTEM C - 638



Art.nr.	∅	
	mm	inch
03091157	200 x 2 x 108	8 x 2 x 4
03091158	200 x 2 x 159	8 x 2 x 6
03091165	250 x 2 x 108	10 x 2 x 4
03091196	250 x 2 x 159	10 x 2 x 6
03091159	300 x 2 x 108	12 x 2 x 4
03091160	300 x 2 x 159	12 x 2 x 6

### T piece male - female x 2 x female 45° SYSTEM B - 639



Art.nr.	∅	
	mm	inch
03091210	200 x 2 x 108	8 x 2 x 4
03091211	200 x 2 x 159	8 x 2 x 6
03091212	250 x 2 x 108	10 x 2 x 4
03091213	250 x 2 x 159	10 x 2 x 6
03091214	300 x 2 x 108	12 x 2 x 4
03091215	300 x 2 x 159	12 x 2 x 6

# SYSTEM IT

## 2.1 Quick couplings galvanised

### 649 - Y-piece female SYSTEM IT x 2 x male SYSTEM C



Art.nr.	∅	
	mm	inch
03221120	200 x 159	8 x 6
03221121	250 x 159	10 x 6
03221122	300 x 159	12 x 6

### 650 - Y-piece male SYSTEM IT x 2 x male SYSTEM C



Art.nr.	∅	
	mm	inch
03221125	200 x 159	8 x 6
03221126	250 x 159	10 x 6
03221127	300 x 159	12 x 6

### 651 - Y-piece female SYSTEM IT x 2 x female SYSTEM B



Art.nr.	∅	
	mm	inch
03221130	200 x 159	8 x 6
03221131	250 x 159	10 x 6
03221132	300 x 159	12 x 6

### 652 - Y-piece male SYSTEM IT x 2 x female SYSTEM B



Art.nr.	∅	
	mm	inch
03221135	200 x 159	8 x 6
03221136	250 x 159	10 x 6
03221137	300 x 159	12 x 6

### 679 - Y-piece female SYSTEM IT x 2 x male SYSTEM IT



Art.nr.	∅	
	mm	inch
03792105	200	8
03792106	250	10
03221379	300	12

# SYSTEM IT

## Quick couplings galvanised 2.1

### Y-piece male SYSTEM IT x 2 x female SYSTEM IT - 682



Art.nr.	∅	
	mm	inch
03221380	200	8
03221367	250	10
03221381	300	12

### Y piece female with reduction - 691



Art.nr.	∅	
	mm	inch
03221008	250 x 200	10 x 8
03221010	300 x 200	12 x 8
03221012	300 x 250	12 x 10

### Y piece male with reduction - 692



Art.nr.	∅	
	mm	inch
03221108	250 x 200	10 x 8
03221110	300 x 200	12 x 8
03221112	300 x 250	12 x 10

# SYSTEM IT

## 2.1 Quick couplings galvanised

### 653 - Reversing piece female



Art. nr.	∅	
	mm	inch
03851605	200	8
03851606	250	10
03851607	300	12

### 654 - Reversing piece male



Art. nr.	∅	
	mm	inch
03851600	200	8
03851601	250	10
03851602	300	12

### 644 - Flange piece male - BBA



Art. nr.	∅		Flange (holes)
	mm	inch	
03811500	200	8	K295 (8)
03811501	200	8	K295 (12)
03811504	250	10	K350 (8)
03811502	250	10	K350 (12)
03811503	300	12	K400 (12)

### 684 - Flange piece male - DIN



Art. nr.	∅		Flange (holes)
	mm	inch	
03811301	200	8	K295 (8)
03811302	200	8	K295 (12)
03811303	250	10	K350 (8)
03811304	250	10	K350 (12)
03811305	300	12	K400 (12)

### 659 - Flange piece male - ANSI



Art. nr.	∅		Flange (holes)
	mm	inch	
03811525	200	8	K295 (8)
03811526	250	10	K350 (12)
03811527	300	12	K400 (12)

# SYSTEM IT

## Quick couplings galvanised 2.1

### Flange piece female - BBA - 642



Flange (holes)	∅		Art. nr.
	mm	inch	
K295 (8)	200	8	03811510
K295 (12)	200	8	03811511
K350 (8)	250	10	03811514
K350 (12)	250	10	03811512
K400 (12)	300	12	03811513

### Flange piece female - DIN - 683



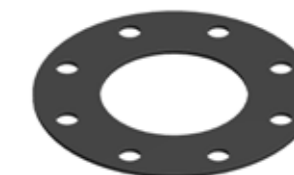
Flange (holes)	∅		Art. nr.
	mm	inch	
K295 (8)	200	8	03811310
K295 (12)	200	8	03811311
K350 (8)	250	10	03811312
K350 (12)	250	10	03811313
K400 (12)	300	12	03811314

### Flange piece female - ANSI - 658



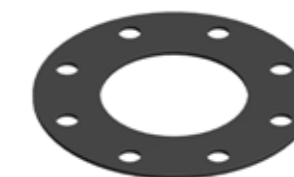
Flange (holes)	∅		Art. nr.
	mm	inch	
K295 (8)	200	8	03811520
K350 (12)	250	10	03811521
K400 (12)	300	12	03811522

### Flange gasket DIN - 802



∅	∅		Art. nr.
	mm	inch	
200	8	03401928	
250	10	03401930	
300	12	03401931	

### Flange gasket ANSI - 803



∅	∅		Art. nr.
	mm	inch	
200	8	03401942	
250	10	03401943	
300	12	03401944	

668 – Strainer with coupling female (cup / lever)



Art.nr.	∅	
	mm	inch
03841875	200	8
03841876	250	10
03841877	300	12

686 – Strainer with hose connection



Art.nr.	∅	
	mm	inch
03141248	200	8
03141249	250	10
03141250	300	12

656 – Sewage strainer with coupling female (cup / lever)



Art.nr.	∅	
	mm	inch
03841855	200	8
03841856	250	10
03841857	300	12

685 – Sewage strainer with hose connection



Art.nr.	∅	
	mm	inch
03141175	200	8
03141176	250	10
03141177	300	12

811 – BBA Hose clamp heavy duty



Art.nr.	∅	
	mm	inch
07214332	215-228	8
07214334	267-282	10
07214336	318-336	12

Strainer with coupling female (cup / lever) – 690

Art.nr.	∅	
	mm	inch
03842708	200	8
03842710	250	10
03842712	300	12



Sewage strainer bin with coupling female (cup / lever) – 660

Art.nr.	∅	
	mm	inch
03842508	200	8
03842510	250	10
03842512	300	12



## SYSTEM IT

### 2.3 BBA non-return valve

#### 662 - BBA "Handy" non-return valve



Art.nr.	Ø	
	mm	inch
09051330	200	8
06051331	250	10

### 2.4 Pipes

#### 1130 - Discharge pipes HDPE with coupling



Art.nr.	Ø		length	max. pressure
	mm	inch		
01301954	200	8	6	6
01301961	250	10	6	5
01301956	300	12	6	4

#### HDPE pipes

- Shock proof
- Lightweight
- Durable
- Corrosion free
- Easy handling
- Easy to repair
- Easy to install



## SYSTEM IT

### Hoses 2.5

#### Suction / delivery hose Heduflex with quick couplings - 1303

max. pressure	l	Ø Coupling		Art.nr.
		mm	inch	
bar	m			
2	3	200	8	07045187
2	4	200	8	07045192
2	5	200	8	07045189
2	3	250	10	07048203
2	4	250	10	07048204
2	5	250	10	07048205
2	3	300	12	07048212
2	4	300	12	07048213
2	5	300	12	07048214

Also available with double clamp (max. pressure 5 bar)



#### Hose flat rollable with quick couplings - 1333

max. pressure	l	Ø		Art.nr.
		mm	inch	
bar	m			
2	5	200	8	07094180
2	10	200	8	07094181
2	5	250	10	07094191
2	10	250	10	07094192
2	5	300	12	07094196
2	10	300	12	07094197



# SYSTEM C

## 3.1 Quick couplings

### 101 - Coupling female (cup / lever) complete black



Art.nr.	∅	
	mm	inch
03051061	50	2
03051062	70	2,5
03051063	89	3
03051064	108	4
03051066	159	6

### 103 - Coupling male (ball) black



Art.nr.	∅	
	mm	inch
03051051	50	2
03051052	70	2,5
03051053	89	3
03051054	108	4
03051056	159	6

### 104 - Hook short black



Art.nr.	∅	
	mm	inch
03051991	50	2
03051992	70	2,5
03051993	89	3
03051994	108	4
03051996	159	6

### 105 - Hook long black



Art.nr.	∅	
	mm	inch
03051981	50	2
03051982	70	2,5
03051983	89	3
03051984	108	4
03051986	159	6

### 106 - Lever black



Art.nr.	∅	
	mm	inch
03051971	50	2
03051972	70	2,5
03051973	89	3
03051974	108	4
03051976	159	6

# SYSTEM C

## Quick couplings 3.1

### Rivet (set 3pcs) black - 107



Art.nr.	∅	
	mm	inch
03052001	50	2
03052002	70	2,5
03052003	89	3
03052004	108	4
03052006	159	6

### O-ring rubber - 108



Art.nr.	∅	
	mm	inch
03391092	50	2
03391093	70	2,5
03391094	89	3
03391095	108	4
03391097	159	6

### Welding coupling male (ball) black - 109



Art.nr.	∅	
	mm	inch
03041881	50	2
03041882	70	2,5
03041883	89	3
03041884	108	4
03041886	159	6

### Welding coupling female (cup / lever) black - 110



Art.nr.	∅	
	mm	inch
03041971	50	2
03041972	70	2,5
03041973	89	3
03041974	108	4
03041976	159	6

### Hose connection male (ball) - 115



Art.nr.	∅	
	mm	inch
03082115	50	2
03081239	70	2,5
03081258	89	3
03082117	108	4
03082119	159	6

# SYSTEM C

## 3.1 Quick couplings galvanised

### 116 - Hose connection special male (ball)



Art.nr.	∅		∅ spigot
	mm	inch	
03081254	70	2,5	50
03081238	70	2,5	63
03081255	70	2,5	75
03082113	89	3	75
03082155	108	4	75
03082156	108	4	89
03082158	108	4	125
03082170	159	6	100
03082172	159	6	125

### 117 - Hose connection female (cup / lever)



Art.nr.	∅	
	mm	inch
03082105	50	2
03081279	70	2,5
03082103	89	3
03082107	108	4
03082109	159	6

### 118 - Hose connection "special" female (cup / lever)



Art.nr.	∅		∅ spigot
	mm	inch	
03081278	70	2,5	50
03082175	70	2,5	63
03082103	89	3	75
03082186	108	4	75
03082187	108	4	89
03082191	108	4	125
03082192	108	4	150
03081309	159	6	100
03081311	159	6	125
03082207	159	6	133

### 810 - Hose clamp light duty



Art.nr.	∅	
	mm	inch
1866170140	50-65	2
1866171180	58-75	2,5
1866171181	68-85	3
1866171185	87-112	4
1866171190	104-138	6
1866171192	130-165	8

# SYSTEM C

## Quick couplings galvanised 3.1

### Hose clamp medium duty - 812

Art.nr.	∅	
	mm	inch
07204260	52-55	2
07204262	60-63	2
07204263	64-70	2,5
07204264	68-73	2,5
07204265	74-79	3
07204267	86-91	3
07204269	97-104	4
07204271	112-121	4
07204275	150-160	6
07204276	162-174	6



### BBA Hose clamp heavy duty - 811

Art.nr.	∅	
	mm	inch
07214327	112-121	4
07214330	162-175	6
07214332	215-228	8
07214334	267-282	10
07214336	318-336	12



### Bend 90° - 119

Art.nr.	∅	
	mm	inch
03071921	50	2
03071922	70	2,5
03071923	89	3
03071924	108	4
03071926	159	6



### Bend 45° - 121

Art.nr.	∅	
	mm	inch
03071121	50	2
03071122	70	2,5
03071123	89	3
03071124	108	4
03071126	159	6





## SYSTEM C

### 3.1 Quick couplings galvanised

#### 122 - Flange bend male (ball) 90° - BBA



Art. nr.	∅		Flange (holes)
	mm	inch	
03121311	50	2	K125 (4)
03121312	70	2,5	K145 (4)
03121313	89	3	K160 (4)
03121314	108	4	K180 (8)
03121316	159	6	K240 (8)

#### 123 - Flange bend male (ball) 90° - DIN



Art. nr.	∅ Coupling		Flange (holes)
	mm	inch	
03121301	50	2	K125 (4)
03121302	70	2,5	K145 (4)
03121303	89	3	K160 (4)
03121304	108	4	K180 (8)
03121306	159	6	K240 (8)

#### 124 - Flange bend male (ball) 135° - BBA



Art. nr.	∅ Coupling		Flange (holes)
	mm	inch	
03121321	50	2	K125 (4)
03121322	70	2,5	K145 (4)
03121323	89	3	K160 (4)
03121324	108	4	K180 (8)
03121326	159	6	K240 (8)

#### 125 - Flange bend male (ball) 135° - DIN



Art. nr.	∅ Coupling		Flange (holes)
	mm	inch	
03121361	50	2	K125 (4)
03121362	70	2,5	K145 (4)
03121363	89	3	K160 (4)
03121364	108	4	K180 (8)
03121366	159	6	K240 (8)

#### 127 - Threaded bend male (ball) 90° - outer thread



Art. nr.	∅ Coupling	
	mm	inch
03131331	50	2
03131332	70	2,5
03131333	89	3
03131334	108	4
03131336	159	6

## SYSTEM C

### Quick couplings galvanised 3.1

#### Ring gasket - 801

Art. nr.	∅	
	mm	inch
03401910	30	1,5
03401911	50	2
03401913	70	2,5
03401914	89	3
03401915	108	4
03401917	159	6



#### Flange gasket DIN - 802

Art. nr.	∅	
	mm	inch
03401921	50	2
03401923	70	2,5
03401924	89	3
03401925	108	4
03401927	159	6
03401928	216	8



#### Reduction piece - 129

Art. nr.	∅ (female (cup / lever) x male (ball))	
	mm	inch
03161181	70 x 50	2,5 x 2
03161182	89 x 70	3 x 2,5
03161183	108 x 89	4 x 3
03161185	159 x 108	6 x 4
03161194	108 x 70	4 x 2,5



#### Reduction piece - 130

Art. nr.	∅ (male (ball) x female (cup / lever))	
	mm	inch
03161171	70 x 50	2,5 x 2
03161172	89 x 70	3 x 2,5
03161173	108 x 89	4 x 3
03161175	159 x 108	6 x 4
03161160	108 x 70	4 x 2,5



#### End plug male (ball) - 131

Art. nr.	∅	
	mm	inch
03061161	50	2
03061162	70	2,5
03061163	89	3
03061164	108	4
03061166	159	6



## SYSTEM C

### 3.1 Quick couplings galvanised

#### 132 - End plug female (cup / lever)



Art.nr.	∅	
	mm	inch
03061151	50	2
03061152	70	2,5
03061153	89	3
03061154	108	4
03061156	159	6

#### 133 - T-piece x female (cup / lever)



Art.nr.	∅	
	mm	inch
03091131	50	2
03091132	70	2,5
03091133	89	3
03091134	108	4
03091136	159	6

#### 134 - T-piece x male (ball)



Art.nr.	∅	
	mm	inch
03091141	50	2
03091142	70	2,5
03091143	89	3
03091144	108	4
03091146	159	6

#### 135 - T-piece x outer thread



Art.nr.	∅	
	mm	inch
03291128	108	4
03291129	159	6

#### 136 - T-piece x 4" female 45° (cup / lever)



Art.nr.	∅	
	mm	inch
03091139	159	6

## SYSTEM C

### Quick couplings galvanised 3.1

#### Y-piece female (cup / lever) x male (ball) - 137



Art.nr.	∅	
	mm	inch
03221363	108	4
03221365	159	6

#### Y-piece male (ball) x female (cup / lever) - 138



Art.nr.	∅	
	mm	inch
03221370	50	2
03221371	70	2,5
03221372	89	3
03221373	108	4
03221375	159	6

#### Reversing piece female (cup / lever) - 139



Art.nr.	∅	
	mm	inch
03151191	50	2
03151192	70	2,5
03151193	89	3
03151194	108	4
03151196	159	6

#### Reversing piece male (ball) - 140



Art.nr.	∅	
	mm	inch
03151201	50	2
03151202	70	2,5
03151203	89	3
03151204	108	4
03151206	159	6

#### Sock drain connection piece - 141



Art.nr.	∅ Drainconnection		∅
	mm	inch	
03081818	89	108	4
03081820	100	108	4

# SYSTEM C

## 3.1 Quick couplings galvanised

### 142 - Flange piece female (cup / lever) - BBA



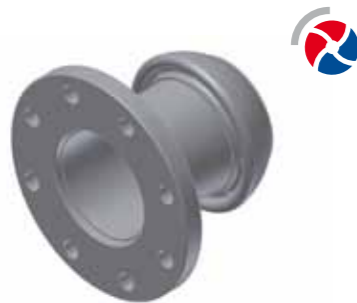
Art. nr.	∅ Coupling		Flange (holes)
	mm	inch	
03111901	50	2	K125 (4)
03111902	70	2,5	K145 (4)
03111903	89	3	K160 (4)
03111224	108	4	K180 (8)
03111226	159	6	K240 (8)

### 143 - Flange piece female (cup / lever) - DIN



Art. nr.	∅ Coupling		Flange (holes)
	mm	inch	
03111881	50	2	K125 (4)
03111882	70	2,5	K145 (4)
03111883	89	3	K160 (4)
03111904	108	4	K180 (8)
03111906	159	6	K240 (8)

### 144 - Flange piece male (ball) - BBA



Art. nr.	∅ Coupling		Flange (holes)
	mm	inch	
03111301	50	2	K125 (4)
03111302	70	2,5	K145 (4)
03111303	89	3	K160 (4)
03111204	108	4	K180 (8)
03111206	159	6	K240 (8)

### 145 - Flange piece male (ball) - DIN



Art. nr.	∅ Coupling		Flange (holes)
	mm	inch	
03111331	50	2	K125 (4)
03111332	70	2,5	K145 (4)
03111333	89	3	K160 (4)
03111304	108	4	K180 (8)
03111306	159	6	K240 (8)

### 801 - Ring gasket



Art. nr.	∅ Coupling	
	mm	inch
03401910	30	1,5
03401911	50	2
03401913	70	2,5
03401914	89	3
03401915	108	4
03401917	159	6

# SYSTEM C

## Quick couplings galvanised 3.1

### Flange gasket DIN - 802



Art. nr.	∅	
	mm	inch
03401921	50	2
03401923	70	2,5
03401924	89	3
03401925	108	4
03401927	159	6
03401928	216	8

### Thread piece female (cup / lever) - outer thread - 146



Art. nr.	∅ Outer thread		∅ Coupling	
	inch	mm	mm	inch
03101208	1,5	50	2	2
03101210	2	50	2	2
03101119	2,5	50	2	2
03101212	2	70	2,5	2,5
03101211	2,5	70	2,5	2,5
03101209	3	70	2,5	2,5
03101213	3	89	3	3
03101121	2,5	89	3	3
03101214	4	108	4	4
03101217	3	108	4	4
03101218	2	108	4	4
03101216	6	159	6	6
03101127	2,5	159	6	6

### Thread piece male (ball) outer thread - 147



Art. nr.	∅ Outer thread		∅ Coupling	
	inch	mm	mm	inch
03101228	1,5	50	2	2
03101220	2	50	2	2
03101221	2,5	70	2,5	2,5
03101231	3	70	2,5	2,5
03101222	2,5	108	4	4
03101223	3	89	3	3
03101224	4	108	4	4
03101229	2	108	4	4
03101227	3	108	4	4
03101226	6	159	6	6
03101230	4	159	6	6

## SYSTEM C

### 3.1 Quick couplings galvanised

#### 148 - Threaded piece female (cup / lever) – inner thread



Art.nr.	∅	
	mm	inch
03101207	50	2
03101245	70	2,5
03101246	89	3
03101247	108	4
03101248	159	6

#### 149 - Thread piece male (ball) inner thread



Art.nr.	∅ Coupling	
	mm	inch
03101235	50	2
03101242	89	3
03101243	108	4
03101244	108	4
03101249	159	6

#### 151 - Transition piece male (ball) SYSTEM C x male (ball / lever) SYSTEM B



Art.nr.	∅	
	mm	inch
03151004	108 x 108	4 x 4
03151006	159 x 159	6 x 6

#### 152 - Transition piece male (ball) SYSTEM C x male (ball / lever) SYSTEM B



Art.nr.	∅	
	mm	inch
03151014	108 x 108	4 x 4
03151016	159 x 159	6 x 6

## SYSTEM C

### Strainers 3.2

#### Strainer with coupling female (cup / lever) - 168



Art.nr.	∅	
	mm	inch
03141841	50	2
03141842	70	2,5
03141843	89	3
03141844	108	4
03141846	159	6

#### Strainer with hose connection - 170



Art.nr.	∅	
	mm	inch
03141241	50	2
03141242	70	2,5
03141243	89	3
03141244	108	4
03141246	159	6

#### Strainer low level female (cup / lever) - 169



Art.nr.	∅	
	mm	inch
03141847	108	4
03141849	159	6

#### Sewage strainer female (cup / lever) - 156



Art.nr.	∅	
	mm	inch
03842001	108	4
03842002	159	6

#### Sewage strainer hose connection - 155



Art.nr.	∅	
	mm	inch
03842004	108	4
03842006	159	6

## SYSTEM C

### 3.2 Strainers

#### 160 - Strainer bin female (cup / lever)



Art.nr.	∅	
	mm	inch
03842504	108	4
03842506	159	6

#### 812 - Hose clamp medium duty



Art.nr.	∅	
	mm	inch
07204260	52-55	2
07204262	60-63	2
07204263	64-70	2,5
07204264	68-73	2,5
07204265	74-79	3
07204267	86-91	3
07204269	97-104	4
07204271	112-121	4
07204275	150-160	6
07204276	162-174	6

#### 811 - BBA hose clamp heavy duty



Art.nr.	∅	
	mm	inch
07214327	112-121	4
07214330	162-175	6
07214332	215-228	8
07214334	267-282	10
07214336	318-336	12

#### 161 - Gate valve with couplings



Art.nr.	∅	
	mm	inch
09011854	108	4
09011856	159	6

## SYSTEM C

### BBA non-return valves 3.3

#### BBA non-return-valve "Handy" male (ball) x female (cup / lever) - 162

Art.nr.	∅	
	mm	inch
09051325	108	4
09051328	159	6



#### BBA "Handy" non-return-valve

Our BBA "Handy" non-return valve is made of a robust steel casing and a low-maintenance rubber discs valve.

The complete assembly is light weight, portable, stackable and has a sturdy base plate.

The non-return valve can be used when several pumps are connected to one discharge line like pipe-line dewatering.

# SYSTEM C

## 3.4 Flow measurement and de-aeration

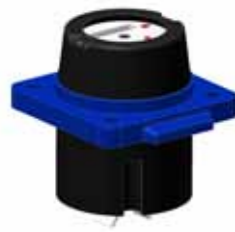
### 164 - BBA "Handy" flow meter (portable, in casing) with quick couplings



Art.nr.	∅ (in)		type
	mm	inch	
13018102	102	4	turbine outside waterstream DWI
13018152	152	6	turbine outside waterstream DWI

### 900 - BBA "Handy" flow meter unit

for 164 and 903



Art.nr.	∅		type
	mm	inch	
13060050	50	2	turbine outside waterstream DWI
13060065	70	2,5	turbine outside waterstream DWI
13060080	89	3	turbine outside waterstream DWI
13060100	108	4	turbine outside waterstream DWI
13060150	159	6	turbine outside waterstream DWI
13060200	216	8	turbine outside waterstream DWI

### 165 - BBA "Handy" flow meter (portable, in casing) with quick couplings



Art.nr.	∅ (in)		type
	mm	inch	
13018305	102	4	turbine inside waterstream DW M
13018352	152	6	turbine inside waterstream DWM

### 901 - BBA "Handy" flow meter unit



Art.nr.	∅		type
	mm	inch	
13017101	108	4	turbine inside waterstream DWM
13017151	159	6	turbine inside waterstream DWM

### 903 - BBA "Handy" flow meter



Art.nr.	∅		type
	mm	inch	
13021051	50	2	turbine outside waterstream WI
13021066	70	2,5	turbine outside waterstream WI
13021081	89	3	turbine outside waterstream WI
13021101	108	4	turbine outside waterstream WI
13021151	159	6	turbine outside waterstream WI
13021051	216	8	turbine outside waterstream WI

# SYSTEM C

## Flow measurement and de-aeration 3.4

### BBA flow meter - 904

type	∅ (in)		Art.nr.
	mm	inch	
turbine inside waterstream WM	50	2	13011051
turbine inside waterstream WM	70	2,5	13011066
turbine inside waterstream WM	89	3	13011081
turbine inside waterstream WM	108	4	13011101
turbine inside waterstream WM	159	6	13011151
turbine inside waterstream WM	216	8	13011201



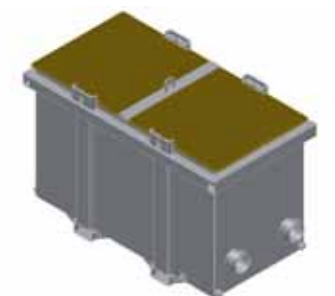
### Flow meter electro magnetic - 910

type	∅		Art.nr.
	mm	inch	
turbine inside waterstream WM	50	2	14510050
turbine inside waterstream WM	70	2,5	14510065
turbine inside waterstream WM	89	3	14510080
turbine inside waterstream WM	108	4	14510100
turbine inside waterstream WM	159	6	14510150
turbine inside waterstream WM	216	8	14510200
Signal converter 115-230V AC 50/60 Hz MAG6000			14500025
Signal converter 11-30V DC/11-24V AC 50/60 Hz MAG6000			14500020
Signal converter 115-230V AC 50/60 Hz MAG5000			14500015
Signal converter 11-30V DC/11-24V AC 50/60 Hz MAG5000			14500008



### Sand collector - 166

flow capacity	Art.nr.
m <sup>3</sup>	
60	14801001
90	14801010
140	14801012



### Sand collector for flow meter - 167

flow capacity	Art.nr.
m <sup>3</sup>	
60	14801004
90	14801003
140	14801005
flow meter excluded	



864 - Sock flow control unit



Art.nr.	∅	
	mm	inch
13407218	108	4

860 -De-aeration unit



Art.nr.	∅	
	mm	inch
13313014	108	4
13313016	159	6

BBA sock flow control unit


The BBA sock flow control unit keeps your sock system going. If limited water is available, the BBA sock flow control unit temporarily shuts off the sock drain connected to it. This prevents excessive air intake which unbalances the sock system and allows you to connect several sock drains to one pump!

BBA de-aeration unit

The BBA de-aeration unit separates the air from the water. This prevents extreme pressure fluctuation in your discharge pipe system.

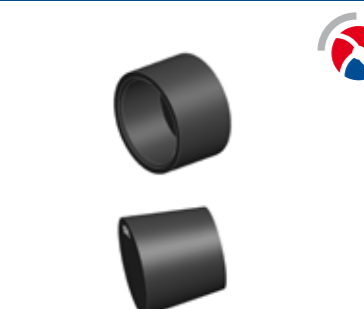


1215 – Header pipes HDPE with quick couplings




Art.nr.	Ø		length
	mm	inch	
01061033	110	4	2 x 51 mm
01061034	110	4	3 x 51 mm
01061048	110	4	4 x 51 mm
01061037	110	4	2 x 58 mm
01061040	110	4	3 x 58 mm
01061029	110	4	4 x 58 mm

1290 – Branch cover / plug




Art.nr.	Ø		type	Ø branch
	mm	inch		
11421939	30	1,5	cover	51
11421940	50	2	cover	58
11421339	30	1,5	conical plug	51 / 58
11421340	50	2	conical plug	-

1216 – Header pipes HDPE with quick couplings




Art.nr.	Ø		type	length
	mm	inch		
01061038	110	4	3 x male SYSTEM C 2"	6
01060905	110	4	4 x male SYSTEM C 2"	6

Discharge pipes HDPE with quick couplings – 1220



max. pressure	length	Ø Coupling		Art.nr.
		mm	inch	
3 bar	5 m	110	4	01050805
3 bar	6 m	110	4	01050806
3 bar	5 m	160	6	01050845
3 bar	6 m	160	6	01050846

Discharge pipes HDPE with quick couplings with clamp – 1221



max. pressure	clamps	length	Ø Coupling		Art.nr.
			mm	inch	
6 bar	2 x medium duty	5 m	110	4	01050815
6 bar	2 x medium duty	6 m	110	4	01050816
5 bar	2 x medium duty	5 m	160	6	01050855
5 bar	2 x medium duty	6 m	160	6	01050856



HDPE pipes

- Shock proof
- Lightweight
- Durable
- Corrosion free
- Easy handling
- Easy to repair
- Easy to install



# SYSTEM C

## 3.6 Hoses

### 1302 – Suction/delivery hose Heduflex with quick couplings



Art.nr.	Ø		length	clamps	max. pressure
	mm	inch			
07048185	102	4	3	2 x medium duty	3
07048183	102	4	3	2 x BBA	6
07048184	102	4	4	2 x medium duty	3
07048182	102	4	4	2 x BBA	6
07048187	152	6	3	2 x BBA	4
07048188	152	6	4	2 x BBA	4

### 1311 – Suction/delivery hose Armorvin with quick couplings



Art.nr.	Ø		length	clamps	max. pressure
	mm	inch			
07018022	100	4	3	2 x medium duty	3
07018023	100	4	4	2 x medium duty	3
07018027	150	6	3	4 x medium duty	2
07018028	150	6	4	4 x medium duty	2

### 1321 – Suction/delivery hose Vacupress with quick couplings



Art.nr.	Ø		length	clamps	max. pressure
	mm	inch			
07050109	100	4	3	Medium duty	3
07050112	100	4	4	Medium duty	2
07050114	150	6	3	Medium duty	3
07050162	150	6	4	Medium duty	3



# SYSTEM C

## Hoses 3.6

### Fire hose white with quick couplings storz - 1330

max. pressure	length	coupling type	Ø		Art.nr.
			mm	inch	
17	20	NA66	50	2	07064209
17	20	NA81	50	2	07064211
17	20	NA81	75	3	07064213
17	20	NA89	75	3	07064217



### Fire hose red with quick couplings storz - 1331

max. pressure	length	coupling type	Ø		Art.nr.
			mm	inch	
17	20	NA81	50	2	07064302
17	20	NA81	75	3	07064304
17	20	NA89	75	3	07064305



### Flat rollable hose vinyl with quick couplings - 1332

max. pressure	length	clamp	Ø		Art.nr.
			mm	inch	
6	25	medium duty	100	4	07025329
6	25	medium duty	150	6	07026325



## FILTERS / WELLPOINT HOSES

4.1

### 14.02 – Vacuum wellpoint filter PVC (shock proof) with bottom



Art.nr.	∅ (outer) mm	length m	filter length m	perforation width mm
11117000	50	3	1	0,3
11117001	50	4	1	0,3
11117002	50	5	1	0,3
11117003	50	6	1	0,3
11117004	50	7	1	0,3
11117005	60	3	1	0,3
11117006	60	4	1	0,3
11117007	60	5	1	0,3
11117008	60	6	1	0,3
11117009	60	7	1	0,3

### 14.03 – Vacuum wellpoint filter PVC (shock proof) with bottom and top closure + innertube PE 32 mm



Art.nr.	∅ (outer) mm	length m	filter length m	perforation width mm
11117036	60	7	6	0,3
11117021	60	8	6	0,3
11117023	60	9	8	0,3

### 14.04 – Gravity filter (shock proof) with bottom



Art.nr.	∅ (outer) mm	length m	filter length m	perforation width mm
11117112	60	8	7	0,3
11117027	90	8	6	0,3
11117038	90	9	7	0,3

### 14.05 – Innertube PVC (shock proof) for gravity filter



Art.nr.	∅ (outer) mm	length m
11025069	50	9
11026068	60	8
11026069	60	9

## FILTERS / WELLPOINT HOSES

4.1

### BBA wellpoint hose (rubber, UV resistant) – 1390

length m	∅ (inner) mm	Art.nr.
1	50 / 50	07054135
1	58 / 58	07054134



### Armorvin wellpoint hose (PVC reinforced, transparent) – 1391

length m	∅ (inner) mm	Art.nr.
1	50 / 50	07054130
1	58 / 58	07054132
1	50 / 58	07054136



Our application designed wellpoint filters are very light in weight and extremely shock proof. It is a pleasure to use the filters and they are very easy (hand pulled) to remove from the ground and ready for use again.

The BBA wellpoint filter hose is designed to handle the short bending radius necessary in a compact wellpoint system. The special hose ends assure a fully air leak free system.

## FILTERS / WELLPOINT HOSES

4.1

### 117 - Hose connection female (cup / lever) SYSTEM C



Art. nr.	∅ Coupling		∅ Outer thread
	mm	inch	inch
03082105	50	2	2
for wellpoint hose connection			

### 417 - Hose connection male (ball / lever) SYSTEM B



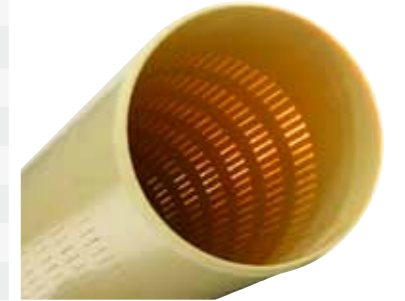
Art. nr.	∅ Coupling		∅ Outer thread
	mm	inch	inch
03581444	50	2	2
for wellpoint hose connection			

## FILTERS / WELLPOINT HOSES

4.1

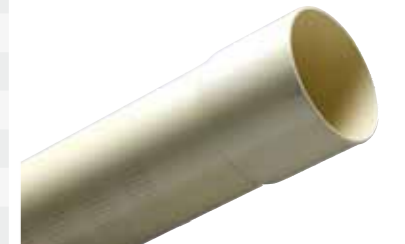
### Deepwell filter PVC, length 5 m. with perforation and glue connection - 1406

∅ (outer)	pressure	thickness	perforation width	Art. nr.
mm	ato	mm	mm	
160	7,5	4,7	0,6 / 0,8	11107217
160	10	6,2	0,6 / 0,8	11107222
200	7,5	5,9	0,6 / 0,8	11107232
200	10	7,7	0,6 / 0,8	11107236
250	7,5	7,3	0,6 / 0,8	11107247
250	10	9,6	0,6 / 0,8	11107248
315	6,3	7,7	0,6 / 0,8	11107257
315	7,5	9,2	0,6 / 0,8	11107258



### Tube PVC, length 5 m, with glue connection - 1407

∅ (outer)	pressure	thickness	Art. nr.
mm	ato	mm	
160	7,5	4,7	11021602
160	10	6,2	11021603
200	7,5	5,9	11022003
200	10	7,7	11022004
250	7,5	7,3	11022502
250	10	9,6	11022503
315	6,3	7,7	11023152
315	7,5	9,2	11023153



### Bottom for deepwell filter, wood - 1490

pressure	∅ (inner)	Art. nr.
ato	mm	
7,5	160	11451600
10	160	11451650
7,5	200	11452000
10	200	11452088
7,5	250	11452500
10	250	11452510
6,3	315	11453150



# FLANGE PIPES

5.1

## 1501 – HPE 100 pipe with flanges – SDR 33



<i>flange steel, galvanized, with epoxy coating</i>						
SDR 33	thickness	length 6mtr	length 8mtr	length 10 mtr	length 12 mtr	
∅	mm	Art.nr.	Art.nr.	Art.nr.	Art.nr.	
160	4,9	01802000	01802001	01802002	01802003	
200	6,2	01802004	01802005	01802006	01802007	
225	6,9	01802008	01802009	01802010	01802011	
250	7,7	01802012	01802013	01802014	01802015	
315	9,7	01802016	01802017	01802018	01802019	
355	10,9	01802020	01802021	01802022	01802023	
400	12,3	01802024	01802025	01802026	01802027	
450	13,8	01802028	01802029	01802030	01802031	
500	15,3	01802032	01802033	01802034	01802035	

## 1502 – HPE 100 pipe with flanges – SDR 26



<i>flange steel, galvanized, with epoxy coating</i>						
SDR 26	thickness	length 6mtr	length 8mtr	length 10 mtr	length 12 mtr	
∅	mm	Art.nr.	Art.nr.	Art.nr.	Art.nr.	
160	6,2	01801801	01801802	01801803	01801804	
200	7,7	01801805	01801806	01801807	01801808	
225	8,6	01801809	01801810	01801811	01801812	
250	9,6	01801813	01801814	01801815	01803055	
315	12,1	01801817	01801818	01801819	01801820	
355	13,6	01801821	01801822	01801823	01801824	
400	15,3	01801825	01801826	01801827	01801828	
450	17,2	01801829	01801830	01801831	01801832	
500	19,1	01801833	01801834	01801835	01801836	

## 1503 – HPE 100 pipe with flanges – SDR 17



<i>flange steel, galvanized, with epoxy coating</i>						
SDR 17	thickness	length 6mtr	length 8mtr	length 10 mtr	length 12 mtr	
∅	mm	Art.nr.	Art.nr.	Art.nr.	Art.nr.	
160	9,5	01801850	01801851	01801852	01801853	
200	11,9	01801854	01801855	01801856	01801857	
225	13,4	01801858	01801859	01801860	01801861	
250	14,8	01801862	01801863	01801864	01801865	
315	18,7	01801866	01801867	01801868	01801869	
355	21,1	01801870	01801871	01801872	01801873	
400	23,7	01801874	01801875	01801876	01801877	
450	26,7	01801878	01801879	01801880	01801881	
500	29,7	01801882	01801883	01801884	01801885	

# FLANGE PIPES

5.2

## HPE 100 pipe with flanges – SDR 33 – 1510



<i>Flange steel, with pp coating glass fiber reinforced</i>						
SDR 33	thickness	length 6mtr	length 8mtr	length 10 mtr	length 12 mtr	
∅	mm	Art.nr.	Art.nr.	Art.nr.	Art.nr.	
160	4,9	01803000	01803001	01803002	01803003	
200	6,2	01803004	01803005	01803006	01803008	
225	6,9	01803009	01803010	01803011	01803012	
250	7,7	01803013	01803014	01803015	01803016	
315	9,7	01803017	01803018	01803019	01803020	
355	10,9	01803021	01803022	01803023	01803024	
400	12,3	01803025	01803026	01803027	01803028	
450	13,8	01803029	01803030	01803031	01803032	
500	15,3	01803033	01803034	01803035	01803036	

## HPE 100 pipe with flanges – SDR26 – 1511



<i>Flange steel, with pp coating glass fiber reinforced</i>						
SDR 26	thickness	length 6mtr	length 8mtr	length 10 mtr	length 12 mtr	
∅	mm	Art.nr.	Art.nr.	Art.nr.	Art.nr.	
160	6,2	01803040	01803041	01803042	01803043	
200	7,7	01803044	01803045	01803046	01803047	
225	8,6	01803048	01803049	01803050	01803051	
250	9,6	01803052	01803053	01803054	01801909	
315	12,1	01803056	01803057	01803058	01803059	
355	13,6	01803060	01803061	01803062	01803063	
400	15,3	01803064	01803065	01803066	01803067	
450	17,2	01803068	01803069	01803070	01803071	
500	19,1	01803072	01803073	01803074	01803075	

## HPE 100 pipe with flanges – SDR 17 – 1512



<i>Flange steel, with pp coating glass fiber reinforced</i>						
SDR 17	thickness	length 6mtr	length 8mtr	length 10 mtr	length 12 mtr	
∅	mm	Art.nr.	Art.nr.	Art.nr.	Art.nr.	
160	9,5	01803080	01803081	01803082	01803083	
200	11,9	01803084	01803085	01803086	01803087	
225	13,4	01803088	01803089	01803090	01803091	
250	14,8	01803092	01803093	01803094	01803095	
315	18,7	01803096	01803097	01803098	01803099	
355	21,1	01803100	01803101	01803102	01803103	
400	23,7	01803104	01803105	01803106	01803107	
450	26,7	01803108	01803109	01803110	01803111	
500	29,7	01803112	01803113	01803114	01803115	

BBA Pumps BV

Edisonstraat 12

Postbus 498

7000 AL Doetinchem

The Netherlands

p +31 (0)314-368 436

f +31 (0)314-378 403

e [info@bbapumps.com](mailto:info@bbapumps.com)

i [www.bbapumps.com](http://www.bbapumps.com)

